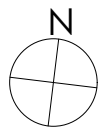
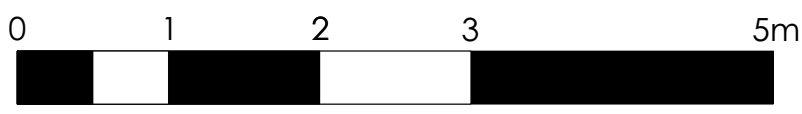


SEJOUR
S: 27,58 m²
**14-2.4
STUDIO**

**14-2.5
APPART
2 CH.**

**13
IO
UR
7 m²**



PROJECT : GDLA 2
Commercial Plan



Date : 10/03/2022

Location :
Rue de la Monnaie, 14
5000 Namur

BOULEVARD DE LA WOLUWE/WOLUWELAAN, 46/11
1200 BRUXELLES / BRUSSEL
Tel : +32 740 14 50

+2

Furniture is fictional and for illustrative purposes only.
The dimensions and configurations of the apartments are given for information only.